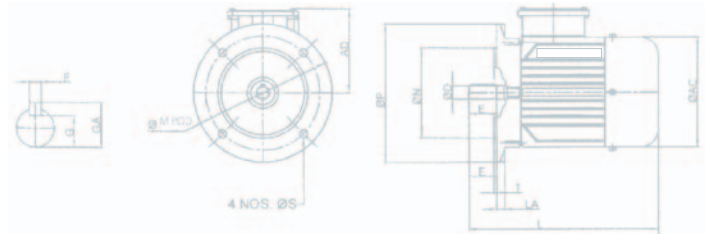
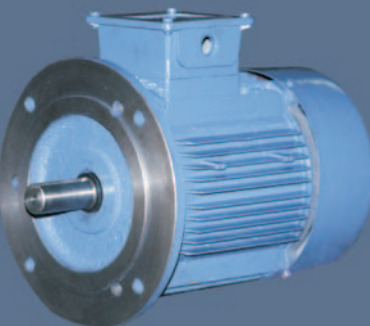
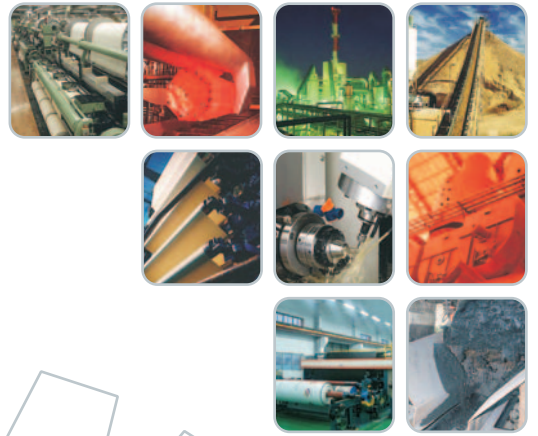


IS 325 : 1996



POWERTEK EQUIPMENT CO.

INTRODUCTION :

"PEC" have been a driving force for many scientific, research and Industrial projects for over two decades. Ravi Motors has an impressive range of AC induction motors (single and three phase). In addition, we have a wide range of special application motors, worm and in-line geared motors. Compact designs, sleek, elegant and light weight products have proven records of reliability. Therefore, they are preferred by the equipment designers and manufactures.

All these products are manufactured with insulation Class "F" (with temperature limits of Class "B" & "H" Class on request) and IP54 / IP55 / IP44 degree of protection as standard features. All motors conform to IEC and BIS standard specifications.

Our manufacturing plant is fully equipped with all required infra-structure for production and quality control.

MATERIAL & PROCESS ADVANTAGE :

■ **Motor Body :**

Motor up to 112 m Frame in Aluminum Pressure Die-Cast and Higher Frames in Cast Iron Components.

■ **Stamping :**

Imported cold rolled non grain oriented (CRNGO) high silicon steel.

■ **Copper Wire :**

Super enameled dual coat copper wire.

■ **Insulating Material :**

Imported Nomex equivalent to Class H.

■ **Varnish :**

Dr. Beck varnish with high dielectric strength almost eliminating chances of insulation failure. Class H Insulation is available upon request.

■ **Bearing :**

Double sealed (metallic sealing) ball bearing lubricated for life with high quality imported grease.

■ **Rotor :**

Pressure die cast with 99.7% EC grade pure aluminium.

■ **Dynamic Balancing :**

Dynamic balancing with high precision balancing machines resulting in low vibration in motors.

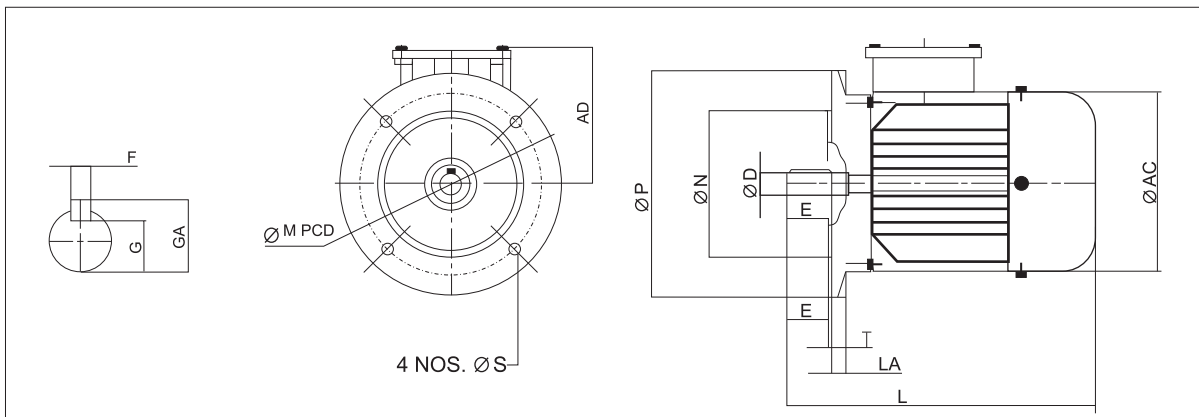
MFGD. WITH BIS STANDARD SPECIFICATION AS BELOW :

- IS : 325 : Specifications for three phase induction motors.
- IS : 1231 : Dimensions of three phase foot mounted inductions motors.
- IS : 2223 : Dimensions of flange mounted AC induction motors.
- IS : 8789 : Values of performance characteristics for three phase inductions motors.
- IS : 2691 : Degree of protection
- IS : 1271 : Class of Insulation

FEATURES :

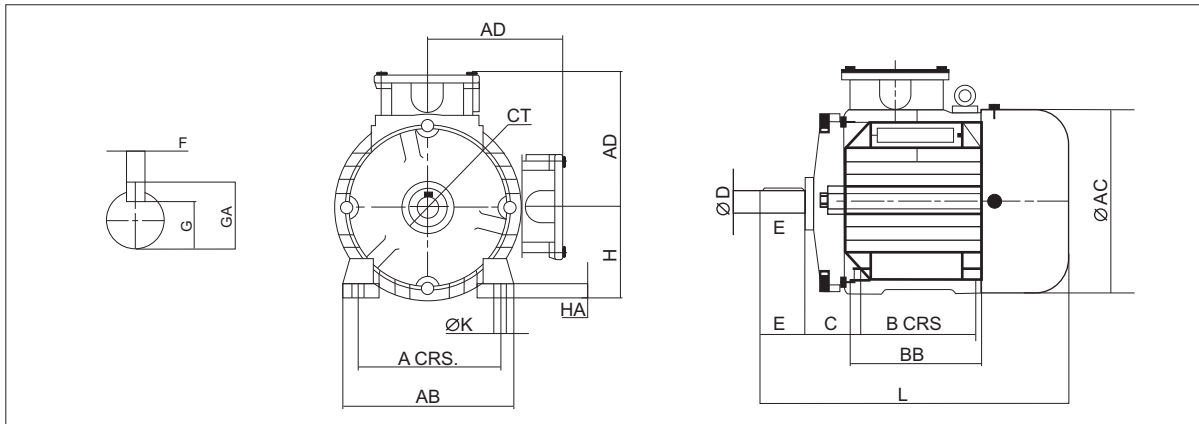
- Voltage Variation $\pm 10\%$, Frequency Variation $\pm 6\%$, Ambient temperatures higher than 45°C. Class of insulation 'F' or 'H'
- Motors with cooling arrangement as per IS : 4691, Degrees of Protection IP 54 or IP 55
- Motors suitable for varied application in industries like Textiles, Process, Mills, Gear Boxes, Power Generation, Machine Tools, Paper, Steel, Sugar Mills.
- Customise Motors as per specified requirement.
- For special needs, application engineering services for sizing of motor or special torque speed characteristic requirements are available.

DIMENSIONS OF FLANGE MOUNTED MOTORS (B5)



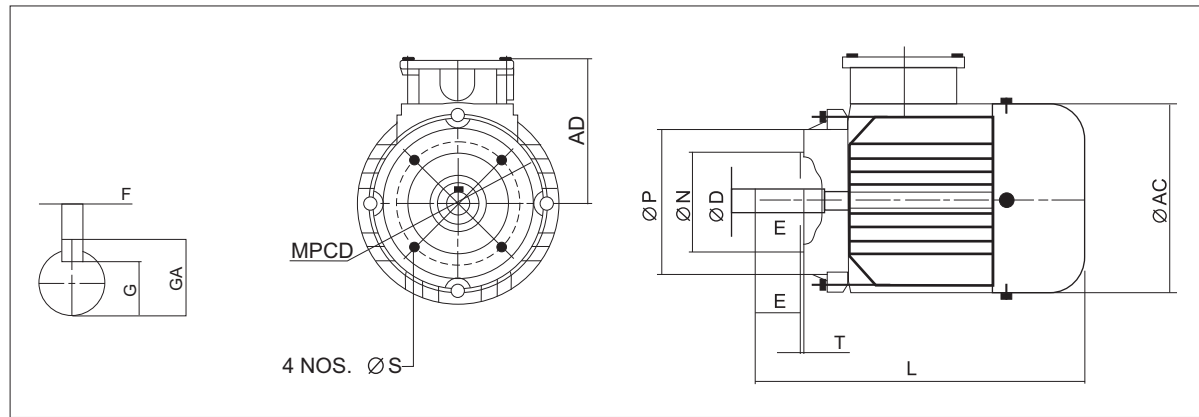
FRAME SIZE	B5 FLANGE DETAILS						SHAFT DETAILS						OVERALL DETAILS		
	ØP	M PCD	ØN	ØS	T	LA	ØD	E	F	GA	G	CT	AD	ACØ	L
63	140	115	95	10	3	9	11	23	4	12.5	8.5	M4	104	118	215
71	160	130	110	10	3.5	9	14	30	5	16	11	M5	110	140	240
80	200	165	130	12	3.5	10	19	40	6	21.5	15.5	M6	120	160	280
90S	200	165	130	12	3.5	10	24	50	8	27	20	M8	130	176	310
90L	200	165	130	12	3.5	10	24	50	8	27	20	M8	130	176	335
100L	250	215	180	15	4	11	28	60	8	31	24	M10	140	199	374
112M	250	215	180	15	4	11	28	60	8	31	24	M10	152	224	380
132S	300	265	230	15	4	12	38	80	10	41	33	M12	180	262	455
132M	300	265	230	15	4	12	38	80	10	41	33	M12	180	262	493

DIMENSIONS OF FOOT MOUNTED MOTORS (B3)



FRAME SIZE	A	B	C	H	ØK	AB	BB	HA	ØD	E	F	GA	G	CT	AD	ACØ	L
63	100	80	40	63	7	122	108	8	11	23	4	12.5	8.5	M4	104	118	215
71	112	90	45	71	7	137	108	11	14	30	5	16	11	M5	110	140	240
80	125	100	50	80	10	155	126	12	19	40	6	21.5	15.5	M6	120	160	280
90S	140	100	56	90	10	172	130	12	24	50	8	27	20	M8	130	176	310
90L	140	125	56	90	10	172	156	12	24	50	8	27	20	M8	130	176	335
100L	160	140	63	100	12	198	170	14	28	60	8	31	24	M10	140	199	374
112M	190	140	70	112	12	225	176	14	28	60	8	31	24	M10	152	224	380
132S	216	140	89	132	12	250	172	17	38	80	10	41	33	M12	180	262	455
132M	216	178	89	132	12	250	212	17	38	80	10	41	33	M12	180	262	493

DIMENSIONS OF FACE MOUNTED MOTORS (B14)



FRAME SIZE	B14 FLANGE DETAILS					SHAFT DETAILS						OVERALL DETAILS		
	ØP	M PCD	ØN	ØS	T	ØD	E	F	GA	G	CT	AD	ACØ	L
63	90	75	60	M5	2.5	11	23	4	12.5	8.5	M4	104	118	215
71	105	85	70	M6	2.5	14	30	5	16	11	M5	110	140	240
80	120	100	80	M6	3	19	40	6	21.5	15.5	M6	120	160	280
90S	140	115	95	M8	3	24	50	8	27	20	M8	130	176	310
90L	140	115	95	M8	3	24	50	8	27	20	M8	130	176	335
100L	160	130	110	M8	3.5	28	60	8	31	24	M10	140	199	374
112M	160	130	110	M8	3.5	28	60	8	31	24	M10	152	224	380
132S	200	165	130	M12	3.5	38	80	10	41	33	M12	180	262	455
132M	200	165	130	M12	3.5	38	80	10	41	33	M12	180	262	493

415 Volt, 50Hz, 3 Phase Insulation B or H class Ambient Temperature 40oC TEFC Construction

2 POLE MOTORS (3000 RPM Synchronous)							
FRAME SIZE	OUTPUT		SPEED RPM	CURRENT AMPS	TORQUE kgm	EFF %	POWER FACTOR
	KW	HP					
63	0.09	0.12	2670	0.35	0.035	63.0	0.63
	0.18	0.25	2700	0.55	0.065	68.0	0.73
71	0.25	0.33	2700	0.65	0.088	68.0	0.73
	0.37	0.50	2800	1.05	0.14	70.0	0.77
80	0.55	0.75	2800	1.45	0.20	76.0	0.79
	0.75	1.00	2800	1.70	0.26	76.0	0.80
	1.10	1.50	2820	2.50	0.38	78.0	0.83
90S	1.50	2.00	2840	3.25	0.55	79.0	0.85
90L	2.20	3.00	2850	4.65	0.78	80.0	0.85
100L	3.70	5.00	2850	7.30	1.25	83.0	0.87
112M	5.50	7.50	2880	10.25	1.87	86.0	0.88
132S	7.50	10.00	2880	14.00	2.48	86.0	0.88

4 POLE MOTORS (1500 RPM Synchronous)							
FRAME SIZE	OUTPUT		SPEED RPM	CURRENT AMPS	TORQUE kgm	EFF %	POWER FACTOR
	KW	HP					
63	0.09	0.125	1330	0.52	0.07	59.0	0.62
	0.18	0.25	1350	0.66	0.15	62.0	0.65
71	0.25	0.33	1370	0.82	0.18	68.0	0.66
	0.37	0.50	1370	1.12	0.28	69.0	0.73
80	0.55	0.75	1390	1.52	0.40	73.0	0.73
	0.75	1.00	1400	1.92	0.52	76.0	0.74
90S	1.10	1.50	1410	2.62	0.77	78.0	0.79
90L	1.50	2.00	1410	3.52	1.05	79.0	0.81
100L	2.20	3.00	1420	4.90	1.55	81.0	0.81
112M	3.70	5.00	1430	7.85	2.55	83.0	0.83
132S	5.50	7.50	1440	11.00	3.75	86.0	0.88
132M	7.50	10.00	1440	15.50	4.98	86.0	0.89

6 POLE MOTORS (1000 RPM Synchronous)							
FRAME SIZE	OUTPUT		SPEED RPM	CURRENT AMPS	TORQUE kgm	EFF %	POWER FACTOR
	KW	HP					
71	0.09	0.125	880	0.50	0.10	50.0	0.53
	0.18	0.25	860	0.75	0.19	57.0	0.60
	0.25	0.33	860	1.10	0.26	59.0	0.55
80	0.37	0.50	890	1.20	0.39	68.0	0.67
	0.50	0.75	880	1.60	0.59	69.0	0.68
90S	0.75	1.00	900	2.00	0.77	70.0	0.74
90L	1.10	1.50	900	2.80	1.16	70.0	0.74
100L	1.50	2.00	930	3.60	1.54	77.0	0.75
112M	2.20	3.00	940	5.00	2.30	79.0	0.78
132S	3.70	5.00	950	8.20	3.77	82.0	0.79
132M	5.50	7.50	960	11.80	5.62	83.0	0.78

8 POLE MOTORS (750 RPM Synchronous)							
FRAME SIZE	OUTPUT		SPEED RPM	CURRENT AMPS	TORQUE kgm	EFF %	POWER FACTOR
	KW	HP					
71	0.09	0.125	665	0.72	0.15	45.0	0.47
80	0.18	0.25	680	0.77	0.28	62.0	0.60
	0.25	0.33	670	0.92	0.35	66.0	0.62
90S	0.37	0.50	690	1.41	0.52	67.0	0.58
90L	0.55	0.75	680	1.91	0.79	68.0	0.63
100L	0.75	1.00	700	2.12	1.10	72.0	0.65
	1.10	1.50	700	3.25	1.55	74.0	0.66
112M	1.50	2.00	700	4.25	2.20	76.0	0.67
132S	2.20	3.00	710	5.85	3.05	80.0	0.68
132M	3.70	5.00	710	8.85	5.10	82.0	0.72

POWER-DRIVE

EFFICIENT

SILENT

HEAVY DUTY

OTHER PRODUCTS MANUFACTURING



HELICAL GEAR MOTORS :

Rating	0.25 to 2.2 Kw
Ration	3:1 to 75:1
Shaft Dia.	19 to 38 mm
Mountings	Foot & Flange



COOLING TOWER MOTOR :

Frame	63 to 112 m
Rating	0.25 to 5.5 Kw
Poles	2, 4, 6 & 8
Mountings	B3, B5, B14 & Com.
Protection	IP 44 / 55
Duty Cycle	S1 - S8



PLANETARY GEAR BOX :

Rating	0.25 to 7.5 Kw
Ration	3:1 to 530:1
Shaft Dia.	19 to 120 mm
Mountings	Foot & Flange



TEXTILE MOTORS :

Frame	80 to 112 m
Rating	0.33 to 2.2 Kw
Poles	2, 4, 6 & 8
Mountings	B3, B5, B14 & Com.
Protection	IP 44 / 55
Duty Cycle	S1 - S8
Enclosure	TE, TEFC
Application	Ring, Loom, Autoloom, Spinning



VIBRATION MOTOR :

Frame	63 to 100 L
Rating	0.25 to 2.2 Kw
Poles	2, 4, 6 & 8
Protection	IP 44 / 55
Enclosure	TEFC



BRAKE MOTORS :

Frame	63 to 112 m
Rating	0.25 to 5.5 Kw
Poles	2, 4, 6 & 8
Mountings	B3, B5, B14 & Com.
Protection	IP 44 / 55
Brake Torque	upto Nm
Duty Cycle	S1 - S8

SINGLE PHASE MOTOR :

Frame	63 to 112 L
Rating	0.25 to 2.2 Kw
Poles	2, 4
Protection	IP 44 / 55
Enclosure	TEFC



MULTI-SPEED MOTORS :

Frame	63 to 112 m
Rating	0.25 to 2.2 Kw
Poles	4/2, 8/4, 6/4, 8/6
Mountings	B3, B5, B14 & Com.
Protection	IP 44 / 55
Duty Cycle	S1 - S8
Enclosure	TE, TEFC

Manufacturer :

POWERTEK EQUIPMENT CO.

203, RUNWAL COMMERCIAL COMPLEX,
2nd Floor, LBS MARG, MULUND (W), Mumbai- 400080.
Tel. : +91-22-25905324, 09920961288
Cell : +91 - 9820193114 / 9320193114
E-mail : info@powertekindia.com
powertekmumbai@gmail.com
Visit us : www.powertekindia.com

Authorised Distributor :

