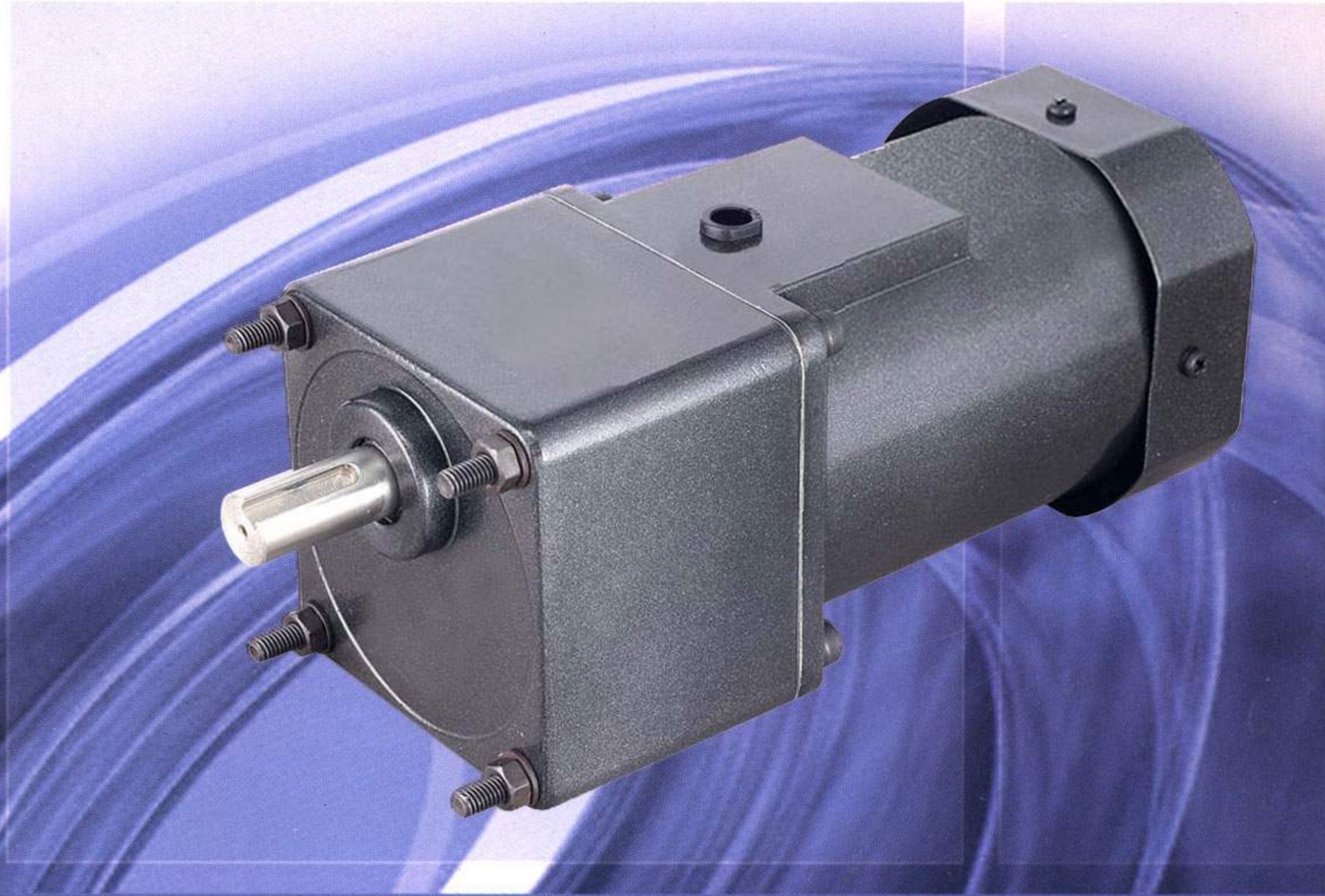
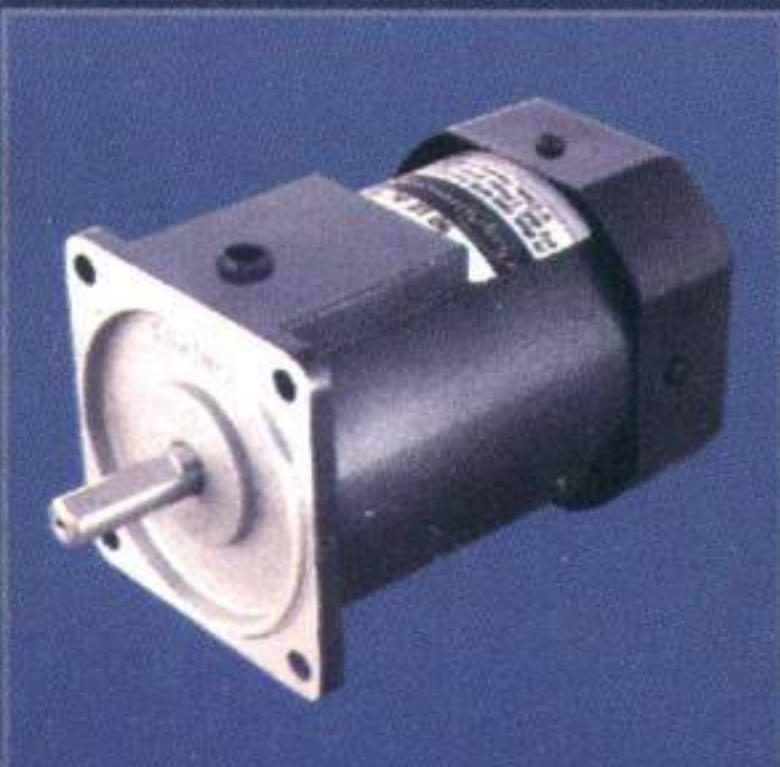
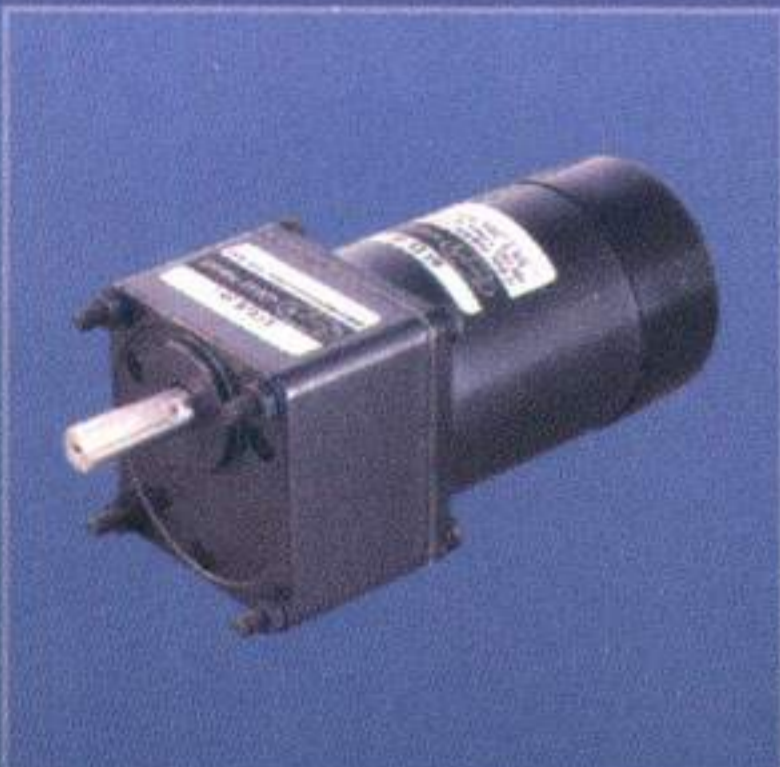
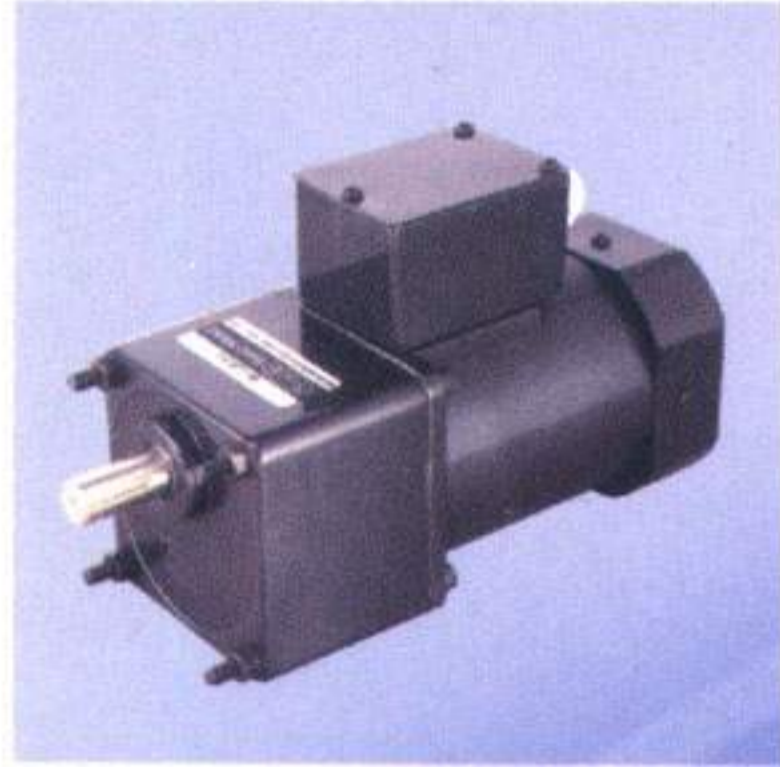


POWERTEK EQUIPMENT CO.



Induction Motors

Reversible Motors

**Electro Magnetic
Brake Motors**

PMDC Motors



**A WORLD CLASS
PRODUCT RANGE**

FHP Motor & Geared Motors

Continuous Operation, rotates in Clockwise or Anti Clockwise Direction
 Speeds are 2880 / 1440 RPM and further low speeds with Gearbox
 Terminal Box or Lead Wire for connection

Specifications :

Output Power W	MODEL	Voltage V	Frequency Hz	Current A	Starting Torque Kg.cm	Rated Torque Kg.cm	Rated Speed RPM	Capacitor F
12	65 IW4G 12	Single Phase 110 V	50	0.30	0.6	0.9	1200	3.0
	65 IX 4G 12	Single Phase 230 V		0.15	0.6	0.9	1200	1.0
	65 IY 4G 12	Three Phase 230 V		0.12	0.9	0.8	1350	---
	65 IZ 4G 12	Three Phase 415 V		0.07	0.9	0.8	1350	---
25	80 IW4G 25	Single Phase 110 V	50	0.40	1.1	1.8	1200	5.0
	80 IX 4G 25	Single Phase 230 V		0.22	1.2	1.8	1200	1.5
	80 IY 4G 25	Three Phase 230 V		0.21	2.1	1.7	1350	---
	80 IZ 4G 25	Three Phase 415 V		0.15	2.1	1.7	1350	---
40	90 IW4G 40	Single Phase 110 V	50	0.70	2.0	3.0	1350	7.5
	90 IX 4G 40	Single Phase 230 V		0.40	2.0	3.0	1350	1.85
	90 IY 4G 40	Three Phase 230 V		0.33	4.0	3.0	1350	---
	90 IZ 4G 40	Three Phase 415 V		0.20	4.0	3.0	1350	---
60	90 IW4G 60	Single Phase 110 V	50	1.10	3.2	4.9	1250	36
	90 IX 4G 60	Single Phase 230 V		0.57	3.2	4.9	1250	6.0
	90 IY 4G 60	Three Phase 230 V		0.54	6.0	4.5	1350	---
	90 IZ 4G 60	Three Phase 415 V		0.30	6.0	4.5	1350	---
90	90 IW4G 90	Single Phase 110 V	50	1.50	4.5	6.9	1300	40
	90 IX 4G 90	Single Phase 230 V		0.75	4.5	6.9	1300	8.0
	90 IY 4G 90	Three Phase 230 V		0.70	7.8	7.0	1350	---
	90 IZ 4G 90	Three Phase 415 V		0.39	7.8	7.0	1350	---
180	90 IY 4G 180	Three Phase 230 V	50	1.50	15.0	14.0	1350	---
	90 IZ 4G 180	Three Phase 415 V		0.75	15.0	14.0	1350	---

Gearmotor Torque Table : Induction / Reversible / Electromagnetic Brake Motors

Unit : kg.cm

RPM	500	416	300	250	200	166	120	100	83	60	50	41	30	25	20	16	15	12.5	10	8.3
Ratio	3	3.6	5	6	7.5	9	12.5	15	18	25	30	36	50	60	75	90	100	120	150	180
12 W	-	2.8	4	4.8	6	7.1	10.2	12	14	18	21	26	33	38	40	40	40	40	40	40
25 W	5	6	8.3	10	12	15	21	25	30	37	45	54	68	80	80	80	80	80	80	80
40 W	7.3	8.7	12	15	18	22	30	36	44	55	66	79	99	118	145	177	195	200	200	200
60 W	12	14	20	24	30	36	45	54	64	81	97	116	162	194	200	200	200	200	200	200
90 W	18	21	30	35	44	53	67	80	96	120	145	171	200	200	200	200	200	200	200	200
180 W	36	42	60	70	88	106	134	160	192	200	200	200	200	200	200	200	200	200	200	200

The actual motor speed is 2~20% less depending upon the load.

The Product contains a built in thermal protector. When a motor overheats for any reason, the thermal protector is opened and the motor stops.

When the motor temperature drops, the thermal protector closes and the motor restarts.

Be sure to turn the motor off before inspecting.

Characteristics, specifications and dimensions are subjected to change without notice.

Dimensions : Induction / Reversible Motors

Unit : mm

OUTPUT POWER W	SQUARE FRAME	A	B	C	ØD	E	ØF	ØG PCD	ØH	ØI	J	ØK	L	M	N	O	P	KEY
12	65	97	40	32	10	13.5	25	76	5.5	58	32	8	7	25	1.5	7	3	4 x 25
25	80	85	43	32	10	15	34	94	5.5	73	32	8	7	25	2.0	7	3	4 x 25
40	90	120	65	38	15	18	34	104	6.5	83	37	10	9	30	2.0	7.5	7	5 x 25
60	90	135	65	38	15	18	34	104	6.5	83	37	12	11	30	2.0	7.5	7	5 x 25
90	90	135	65	38	15	18	34	104	6.5	83	37	12	11	30	2.0	7.5	7	5 x 25
180	90	135	65	38	15	18	34	104	6.5	83	37	12	11	30	2.0	7.5	7	5 x 25

For Electro Magnetic Break Motors 'A' will be longer by 45 mm

